

7 Minute Briefing : PREVENT and CHANEL

Further Information

- ◆ [Safer Rotherham Partnership](#)
- ◆ www.educateagainsthate.com Practical advice for parents and schools
- ◆ www.gov.uk/government/publications/prevent-dutyguidance HM Government Prevent Duty guidance
- ◆ www.gov.uk/government/publications/channelguidance HM Government Channel guidance.

What to do

- ◆ **Immediate danger** call 999
- ◆ **Advice**, phone **0114 2523217** (8am – 4pm). **Out of hours: call 101** and ask for the prevent team
- ◆ Email: Prevent@southyorks.pnn.police.uk
- ◆ The process for raising alerts about concerns runs parallel to the Adult Safeguarding process.

[Worried about an Adult or Child Flowchart](#)

What is Prevent?

Prevent is part of **Contest**, the government's strategy to address terrorism. 3 main priorities of Prevent:

- ◆ Tackle the causes of radicalisation and respond to the ideological challenge of terrorism.
- ◆ Safeguard and support those most at risk of radicalisation through early intervention, identifying them and offering support
- ◆ Enable those who have already engaged in terrorism to disengage and rehabilitate.

What is Contest?

UK government's counter- terrorism strategy which aims to stop people becoming terrorists or supporting terrorism.

Key objectives:

- ◆ **Pursue:** to stop terrorist attacks;
- ◆ **Prevent:** to stop people becoming terrorists or supporting terrorism;
- ◆ **Protect:** to strengthen protection against a terrorist attack;
 - ◆ **Prepare:** to mitigate the impact of a terrorist attack.

What is Channel?

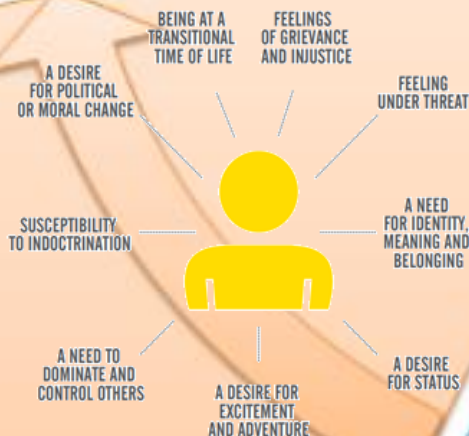
Channel is the name for the national process of identifying and referring a person for early intervention and support - the word refers to channeling a person through the process.

The **Channel programme** is an early intervention multi-agency process designed to safeguard vulnerable people from being drawn into violent extremism or terrorist behaviour and provides tailored support.

Channel works in a similar way to existing safeguarding partnerships aimed at protecting vulnerable people.

Participation in Channel is voluntary. The consent of the individual and their parent/ guardian (if a child) is required before interventions can take place.

Signs



What is Radicalisation/ Extremism?

Radicalisation is the process by which a person comes to support terrorism and in some cases then participates in terrorist activity. There is no one process or indicator of when a person might move to adopt violence in support of extremist ideas. The process is different for each individual and can take place over an extended period or a short time frame

Extremism is defined as, vocal or active opposition to British values, including democracy, the rule of law, individual liberty and mutual respect and tolerance of different faiths and beliefs. It also includes calls for the death of members of the armed forces here or abroad.